

Light efficiency:



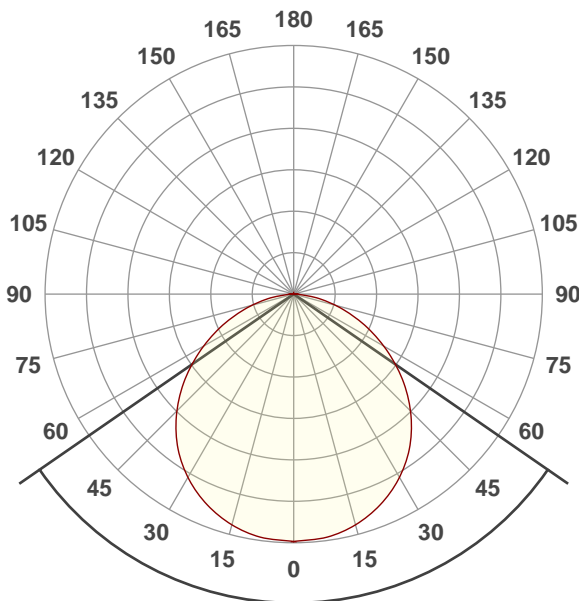
Light quality:



Color temperature:



**Output: 119 lm**  
**Peak: 42.1 cd**  
**Power: 2.3 W**  
**Voltage: 118 V**  
**Current: 0.040 A**  
**PF: 0.49**  
**THD: 163.57 %**



**110.7°**

Product name:  
**SLM-PUCK1-12D90WH**

Driver Used:

Test Date:  
**2019-08-19**

Beam Angle:  
**110.7°**

Field Angle:  
**160.8°**

Cut Off Angle:  
**173.4°**

**Beam details**

\*measured at center of beam

| Mounting Height<br>(feet)\(meter) | Lux*  | Footcandles* | Beam width<br>(feet) / (meter) |
|-----------------------------------|-------|--------------|--------------------------------|
| 4 ft / 1.2 m                      | 28 lx | 3 fcd        | 11.6 ft / 3.5 m                |
| 8 ft / 2.4 m                      | 7 lx  | 1 fcd        | 23.2 ft / 7.1 m                |
| 12 ft / 3.7 m                     | 3 lx  | 0 fcd        | 34.7 ft / 10.6 m               |
| 16 ft / 4.9m                      | 2 lx  | 0 fcd        | 46.3 ft / 14.1 m               |
| 20 ft / 6.1m                      | 1 lx  | 0 fcd        | 57.9 ft / 17.6 m               |

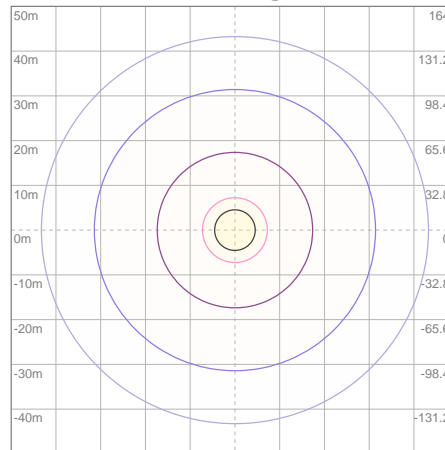
Beam center

# Light planning Photometric Testing Report

## Zonal Lumen Summary

| Zone   | Lumen | %Luminaire |
|--------|-------|------------|
| 0-30   | 32.9  | 27.65%     |
| 0-40   | 54.2  | 45.55%     |
| 0-60   | 94.7  | 79.58%     |
| 60-90  | 24.1  | 20.25%     |
| 70-100 | 10.0  | 8.40%      |
| 90-120 | 0.095 | 0.08%      |
| 0-90   | 119   | 100.00%    |
| 90-180 | 0.162 | 0.14%      |
| 0-180  | 119   | 100.00%    |

## ISO lux diagram



| Lux at center: |         | 5 lx |
|----------------|---------|------|
| — 3%           | 0.15 lx |      |
| — 5%           | 0.25 lx |      |
| — 10%          | 0.50 lx |      |
| — 30%          | 1.50 lx |      |
| — 50%          | 2.50 lx |      |

Conditions:  
Number of planes: 1  
Lux distribution on a surface when lamp is mounted at 3.05 meters from the surface.

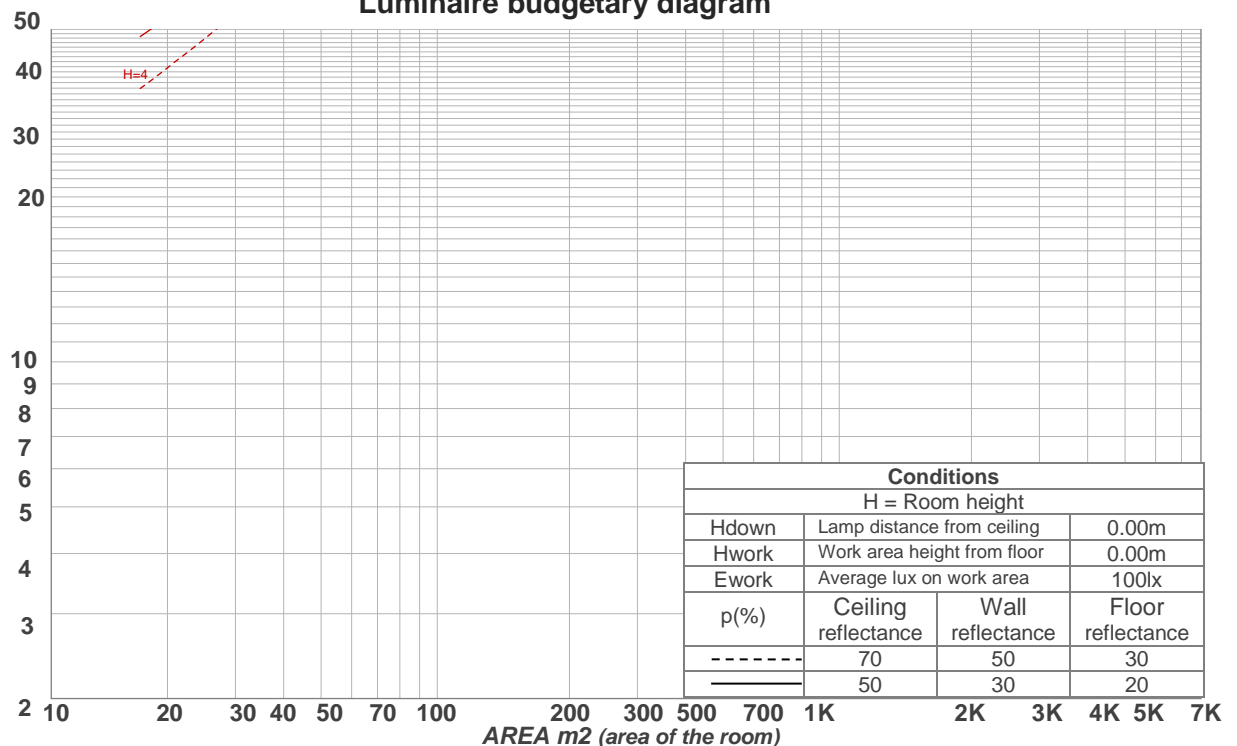
Mounting height: 3.05 meters (10 feet)

## Coefficients of Utilization

| Ceiling reflectance | 80  |     |     |     | 70  |     |     |     | 50  |     |     | 30  |     |     | 10  |     |     | 0   |
|---------------------|---|-----|-----|-----|-----|-----|-----|-----|-----|-----|-----|-----|-----|-----|-----|-----|-----|-----|
| Wall reflectance    | 70  | 50  | 30  | 10  | 70  | 50  | 30  | 10  | 50  | 30  | 10  | 50  | 30  | 10  | 50  | 30  | 10  | 0   |
| Floor reflectance   | 20  | 20  | 20  | 20  | 20  | 20  | 20  | 20  | 20  | 20  | 20  | 20  | 20  | 20  | 20  | 20  | 20  | 0   |
| <b>RCR</b>          | <b>(RCR: Room Cavity Ratio)</b>   |     |     |     |     |     |     |     |     |     |     |     |     |     |     |     |     |     |
|                     | Room Values are expressed as percentage of Lumens delivered to the task surface |     |     |     |     |     |     |     |     |     |     |     |     |     |     |     |     |     |
| 0                   | 119   | 119 | 119 | 119 | 116 | 116 | 116 | 116 | 111 | 111 | 111 | 106 | 106 | 106 | 102 | 102 | 102 | 100 |
| 1                   | 109   | 104 | 100 | 96  | 106 | 102 | 98  | 94  | 97  | 94  | 91  | 94  | 91  | 89  | 90  | 88  | 86  | 84  |
| 2                   | 99  | 91  | 84  | 78  | 96  | 89  | 83  | 77  | 85  | 80  | 75  | 82  | 78  | 74  | 79  | 75  | 72  | 70  |
| 3                   | 90  | 80  | 72  | 65  | 88  | 78  | 71  | 65  | 75  | 69  | 63  | 72  | 67  | 62  | 70  | 65  | 61  | 59  |
| 4                   | 83  | 71  | 62  | 55  | 80  | 69  | 61  | 55  | 67  | 60  | 54  | 64  | 58  | 53  | 62  | 57  | 53  | 50  |
| 5                   | 76  | 63  | 54  | 48  | 74  | 62  | 54  | 47  | 60  | 52  | 47  | 58  | 51  | 46  | 56  | 50  | 46  | 44  |
| 6                   | 70  | 57  | 48  | 42  | 68  | 56  | 47  | 41  | 54  | 47  | 41  | 52  | 46  | 41  | 51  | 45  | 40  | 38  |
| 7                   | 65  | 52  | 43  | 37  | 63  | 51  | 42  | 37  | 49  | 42  | 36  | 48  | 41  | 36  | 46  | 40  | 36  | 34  |
| 8                   | 61  | 47  | 39  | 33  | 59  | 46  | 38  | 33  | 45  | 38  | 32  | 44  | 37  | 32  | 43  | 36  | 32  | 30  |
| 9                   | 57  | 43  | 35  | 29  | 55  | 43  | 35  | 29  | 41  | 34  | 29  | 40  | 34  | 29  | 39  | 33  | 29  | 27  |
| 10                  | 53  | 40  | 32  | 27  | 52  | 39  | 32  | 27  | 38  | 31  | 26  | 37  | 31  | 26  | 36  | 31  | 26  | 24  |

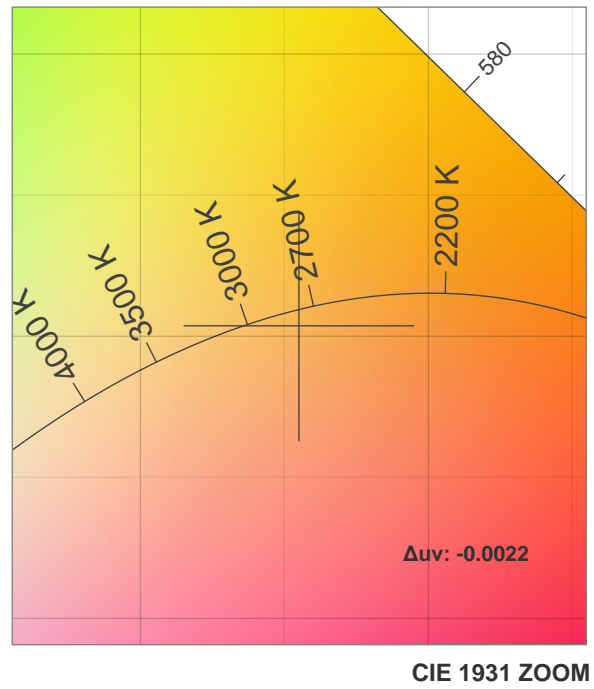
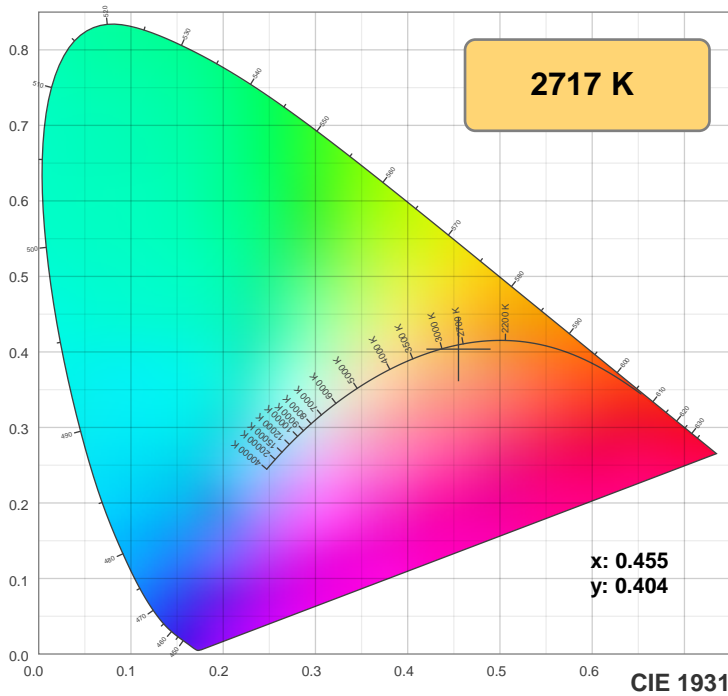
LAMPS (number of lamps)

## Luminaire budgetary diagram

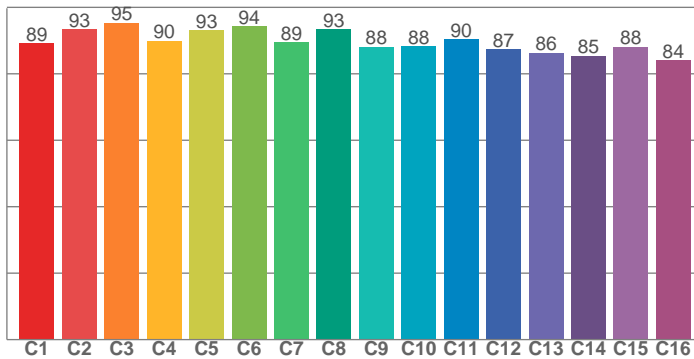


Color details

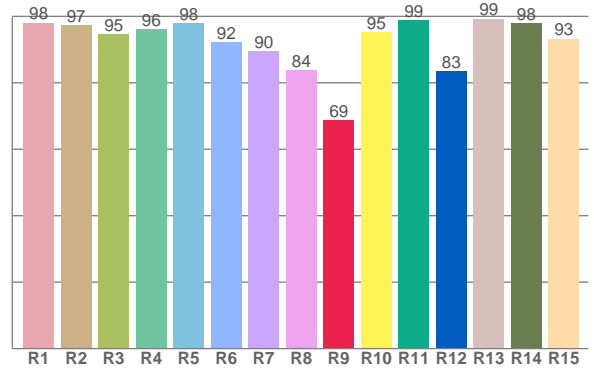
Photometric Testing Report



TM30: 89.9



CRI: 93.7 (R1-R8)



CRI R values, only R1-R8 are used to calculate final CRI value

|      |      |      |      |      |      |      |      |      |      |      |      |      |      |      |
|------|------|------|------|------|------|------|------|------|------|------|------|------|------|------|
| R1   | R2   | R3   | R4   | R5   | R6   | R7   | R8   | R9   | R10  | R11  | R12  | R13  | R14  | R15  |
| 98.1 | 97.4 | 94.5 | 96.1 | 97.8 | 92.2 | 89.6 | 83.7 | 68.8 | 95.2 | 98.8 | 83.4 | 99.3 | 97.9 | 93.3 |

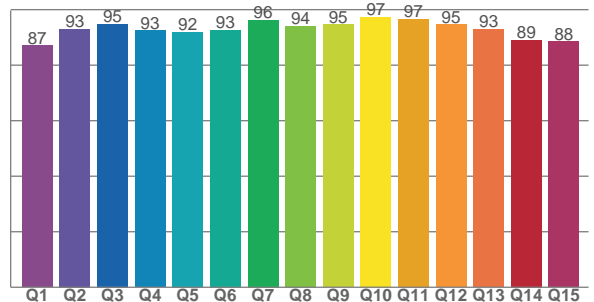
TM30 C values, 16 binned values out of total of 99 C values

|      |      |      |      |      |      |      |      |      |      |      |      |      |      |      |      |
|------|------|------|------|------|------|------|------|------|------|------|------|------|------|------|------|
| C1   | C2   | C3   | C4   | C5   | C6   | C7   | C8   | C9   | C10  | C11  | C12  | C13  | C14  | C15  | C16  |
| 89.2 | 93.4 | 95.4 | 90.0 | 93.0 | 94.3 | 89.5 | 93.4 | 88.0 | 88.3 | 90.3 | 87.4 | 86.3 | 85.5 | 88.1 | 84.0 |

CQS Q values

|      |      |      |      |      |      |      |      |      |      |      |      |      |      |      |
|------|------|------|------|------|------|------|------|------|------|------|------|------|------|------|
| Q1   | Q2   | Q3   | Q4   | Q5   | Q6   | Q7   | Q8   | Q9   | Q10  | Q11  | Q12  | Q13  | Q14  | Q15  |
| 87.1 | 93.1 | 94.8 | 92.5 | 91.9 | 92.7 | 96.2 | 94.1 | 94.6 | 97.4 | 96.6 | 94.7 | 92.9 | 89.1 | 88.5 |

CQS: 92.3



Color parameters

|                   |                       |               |                |             |                     |                           |                           |                  |                  |                                 |
|-------------------|-----------------------|---------------|----------------|-------------|---------------------|---------------------------|---------------------------|------------------|------------------|---------------------------------|
| Color temperature | Color rendering index | Red component | Color fidelity | Color gamut | Color quality scale | Color coordinate cie 1931 | Color coordinate cie 1931 | Color coordinate | Color coordinate | Color deviation from black body |
| CCT               | CRI                   | CRI R9        | TM30 Rf        | TM30 Rg     | CQS                 | x                         | y                         | u                | v                | Δuv                             |
| 2717 K            | 93.7                  | 68.8          | 89.9           | 97.5        | 92.3                | 0.455                     | 0.404                     | 0.262            | 0.349            | -0.0022                         |

## UGR Photometric Testing Report

## Glare Evaluation According to UGR

| p Ceiling   | 70  | 70   | 50   | 50   | 30   | 70                                      | 70   | 50   | 50   | 30   |      |
|---|---|------|------|------|------|---|------|------|------|------|------|
| p Walls   | 50  | 30   | 50   | 30   | 30   | 50                                      | 30   | 50   | 30   | 30   |      |
| p Floor   | 20  | 20   | 20   | 20   | 20   | 20                                      | 20   | 20   | 20   | 20   |      |
| Room size<br>X Y  | Viewing direction at right angles to<br>lamp axis |      |      |      |      | Viewing direction parallel to lamp axis |      |      |      |      |      |
| 2H  | 2H  | 18.7 | 20.0 | 19.0 | 20.2 | 20.5                                    | 18.7 | 20.0 | 19.0 | 20.2 | 20.5 |
|   | 3H  | 20.1 | 21.3 | 20.5 | 21.6 | 21.9                                    | 20.1 | 21.3 | 20.5 | 21.6 | 21.9 |
|   | 4H  | 20.7 | 21.9 | 21.1 | 22.1 | 22.4                                    | 20.7 | 21.9 | 21.1 | 22.1 | 22.4 |
|   | 6H  | 21.2 | 22.2 | 21.5 | 22.5 | 22.8                                    | 21.2 | 22.2 | 21.5 | 22.5 | 22.8 |
|   | 8H  | 21.3 | 22.3 | 21.7 | 22.6 | 23.0                                    | 21.3 | 22.3 | 21.7 | 22.6 | 23.0 |
|   | 12H   | 21.4 | 22.4 | 21.8 | 22.7 | 23.1                                    | 21.4 | 22.4 | 21.8 | 22.7 | 23.1 |
| 4H  | 2H  | 19.3 | 20.5 | 19.7 | 20.7 | 21.0                                    | 19.3 | 20.5 | 19.7 | 20.7 | 21.0 |
|   | 3H  | 21.0 | 21.9 | 21.4 | 22.3 | 22.6                                    | 21.0 | 21.9 | 21.4 | 22.3 | 22.6 |
|   | 4H  | 21.7 | 22.6 | 22.1 | 22.9 | 23.3                                    | 21.7 | 22.6 | 22.1 | 22.9 | 23.3 |
|   | 6H  | 22.3 | 23.0 | 22.7 | 23.4 | 23.8                                    | 22.3 | 23.0 | 22.7 | 23.4 | 23.8 |
|   | 8H  | 22.5 | 23.2 | 22.9 | 23.6 | 24.0                                    | 22.5 | 23.2 | 22.9 | 23.6 | 24.0 |
|   | 12H   | 22.6 | 23.3 | 23.1 | 23.7 | 24.1                                    | 22.6 | 23.3 | 23.1 | 23.7 | 24.1 |
| 8H  | 4H  | 22.0 | 22.7 | 22.4 | 23.1 | 23.5                                    | 22.0 | 22.7 | 22.4 | 23.1 | 23.5 |
|   | 6H  | 22.7 | 23.3 | 23.2 | 23.7 | 24.2                                    | 22.7 | 23.3 | 23.2 | 23.7 | 24.2 |
|   | 8H  | 23.0 | 23.5 | 23.5 | 23.9 | 24.4                                    | 23.0 | 23.5 | 23.5 | 23.9 | 24.4 |
|   | 12H   | 23.2 | 23.7 | 23.7 | 24.1 | 24.6                                    | 23.2 | 23.7 | 23.7 | 24.1 | 24.6 |
| 12H   | 4H  | 22.0 | 22.6 | 22.5 | 23.1 | 23.5                                    | 22.0 | 22.6 | 22.5 | 23.1 | 23.5 |
|   | 6H  | 22.8 | 23.3 | 23.3 | 23.7 | 24.2                                    | 22.8 | 23.3 | 23.3 | 23.7 | 24.2 |
|   | 8H  | 23.1 | 23.5 | 23.6 | 24.0 | 24.5                                    | 23.1 | 23.5 | 23.6 | 24.0 | 24.5 |
| Variation of the observer position for the luminaire distance S |   |      |      |      |      |   |      |      |      |      |      |
| S = 1.0H  | +0.1 / -0.1                                       |      |      |      |      | +0.1 / -0.1                             |      |      |      |      |      |
| S = 1.5H  | +0.2 / -0.4                                       |      |      |      |      | +0.2 / -0.4                             |      |      |      |      |      |
| S = 2.0H  | +0.4 / -0.7                                       |      |      |      |      | +0.4 / -0.7                             |      |      |      |      |      |
| Standard table  | BK06  |      |      |      |      | BK06                                    |      |      |      |      |      |
| Correction<br>summand   | 5.9   |      |      |      |      | 5.9                                     |      |      |      |      |      |
| Corrected glare indices referring to 119 lm total luminous flux |   |      |      |      |      |   |      |      |      |      |      |

Due to our continued efforts to improve our products, product specifications are subject to change without notice. Please refer to our website for the latest test results.